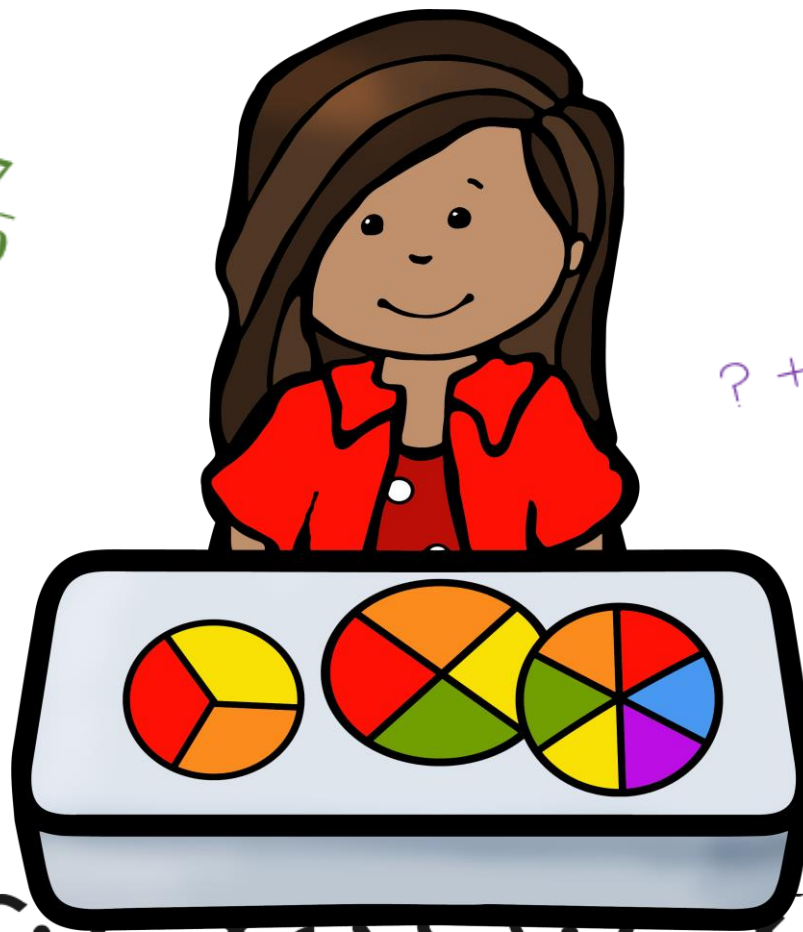


The Sum is . . .  $6\frac{7}{10}$

$$2\frac{1}{2} + ? = 6\frac{7}{10}$$

$$3\frac{1}{5} + ? = 6\frac{7}{10}$$

$$? + 4\frac{3}{10} = 6\frac{7}{10}$$



# The Sum Is . . . $6\frac{7}{10}$

## Materials:

- Recording sheet or math journal
- Fraction manipulatives

## Directions:

- 1) Two mixed numbers have a sum of  $6\frac{7}{10}$ .
  - What might the two mixed numbers be?
- 2) Record as many different equations as you can to represent a sum of  $6\frac{7}{10}$ .
- 3) Model 2 of the equations. Draw the models in your journal or on the recording sheet.
- 4) Be prepared to explain your strategy to a classmate.

Variation: Change the target sum to a different mixed number.

Name \_\_\_\_\_

Date \_\_\_\_\_

The Sum is . . .  $6\frac{7}{10}$  - Recording Sheet

Record as many different equations as you can to represent a sum of  $6\frac{7}{10}$ .

Model one of the equations.

Model another of the equations.

# Graphics and Fonts

