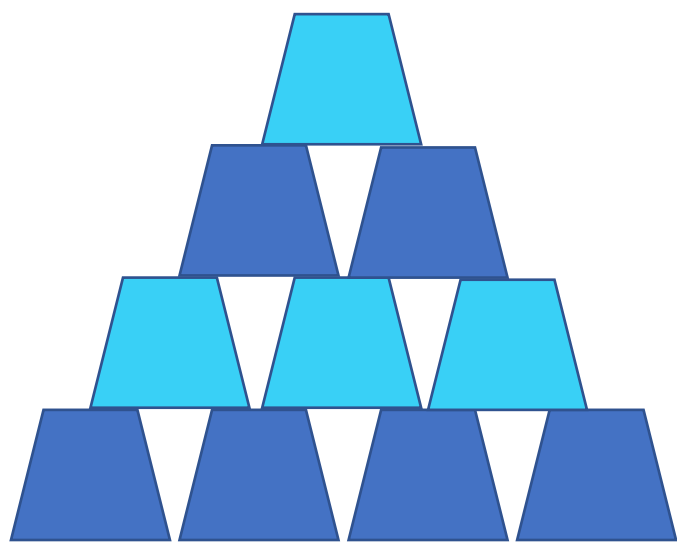


# Power Towers

## A Division Facts Game



If you know the fact,  
you add to the stack.  
How high can it go?  
It depends on what  
you know!

Adapted from Dr. Nicki Newton

# Power Towers

## Materials:

- Empty Pringles cans
- Plastic Solo bathroom cups
- Permanent marker to write a division fact on each cup (ex.  $32 \div 4 = \underline{\quad}$ )
- Multiplication chart to check answers
- Recording sheet (optional)

## Directions:

- 1) Students work with partners.
- 2) Partner 1 picks a cup from the can and solves the division equation. Partner 2 checks the answer on the multiplication chart.
- 3) If player 1's answer is correct, he adds the cup to his tower. If he is incorrect, the cup is returned to the original pile of cups.
- 4) Play continues with player 2 picking a cup and solving the division equation.

## Variations:

- 1) Label the outside of the can with the numbers of the facts inside (e.g. 2s and 5s). Differentiate the station based on the division facts students work with.
- 2) Make a multiplication station by putting multiplication equations on the cups.

Name \_\_\_\_\_

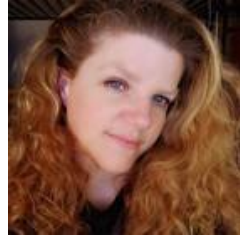
Date \_\_\_\_\_

Facts I Know

Facts to Practice



# Graphics and Fonts



kimberly  
geswein  
fonts

